



**A decision toolbox for cities to improve air quality,  
biodiversity, human wellbeing and reduce climate risks by  
planting more trees in our cities**

## Foreword

100KTREES has completed its first year of activity. With this Newsletter#2 we want to inform you about the progress of our activities and the results achieved in the first third of the project, aware that we still have many challenges to face.

On the one hand we are called to raise awareness and involve our stakeholders in the need to plant trees in their cities to improve well-being and mitigate the effects of climate change. On the other hand, we must do our best to implement an easy-to-use, reliable and scalable system to propose to cities and to the market.

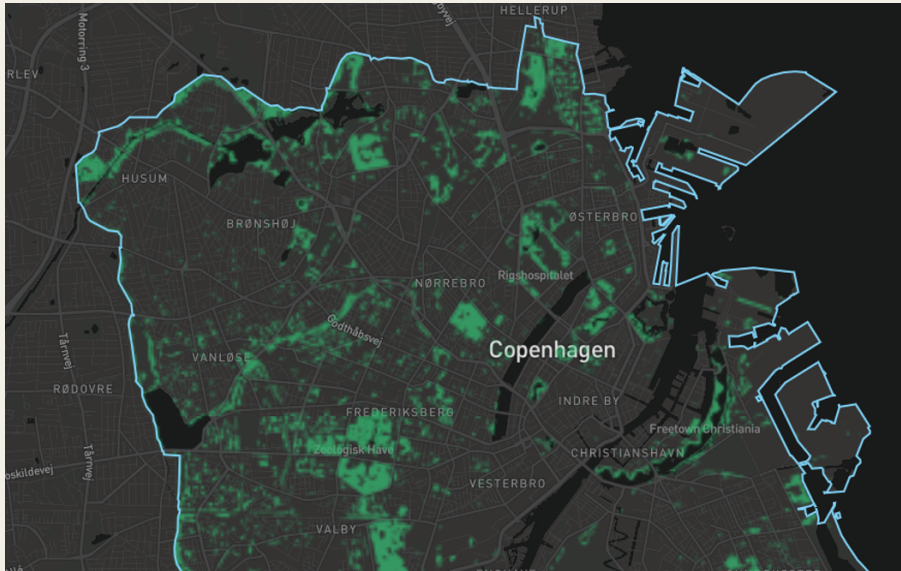
The recent EU law on nature restoration sets binding targets for member states to restore degraded ecosystems and establish green infrastructure. Our project is now seamlessly aligned with this policy, marking a pivotal moment in the EU's commitment to preserving and rehabilitating ecosystems.

We strongly believe that the 100KTREES product will be useful for many European cities to adapt to the demands of European policies and to redesign more liveable spaces for citizens.

The 100KTREES Consortium

## Index

- **Highlights from the second progress meeting of 100KTREES (12-month meeting)**
- **100KTREES first co-creation workshop in Copenhagen**
- **User requirements collection for the implementation of a tree management tool**
- **3D tree map of Copenhagen**



Copenhagen street trees mapping based on Copernicus data. Source: DHI

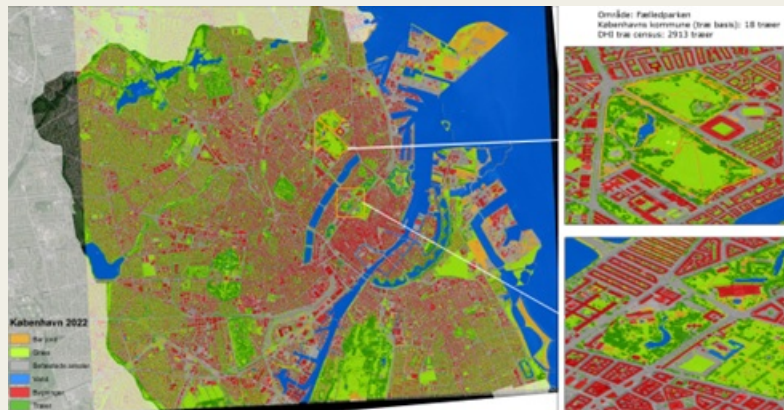
## Highlights from the second progress meeting of 100KTREEs (12-month meeting)

The partners of 100KTREEs met online on December 13th and 14th for the usual six-monthly progress meeting.

The first day, in the presence of a EC project officer and an external expert, was focused on the updating of the activities carried out by each work package in the last semester of the project, together with a work plan for the next 6 months.

The second day was more specifically dedicated to a technical discussion about the implementation aspects of the toolbox.

[Read the article](#)



Very High Resolution (30cm) map of Copenhagen urban core, including trees

## 100KTREEs first co-creation workshop in Copenhagen

Co-creation activities were held with representatives of the municipalities and other interested parties from Copenhagen and Sofia, to gather valuable insights and collaboratively identify user requirements for a software solution addressing the impact of trees in urban environments.

[Read the article](#)



*Co-creation workshops are held along the project with the pilot cities in order to align the development of 100KTREEs toolbox with their needs*

## User requirements collection for the implementation of a tree management tool

In the first project period, activities to identify the potential needs for the management of trees of 100KTREEs users have been carried out.

A multi-faceted methodology was used to gather valuable insights and identify user requirements for the 100KTREEs toolbox.

This involved conducting **interviews**, generating **user stories**, and administering **surveys** to professionals in the field.

These inputs were analysed and used in workshops with participants engaged in collaborative activities and discussions guided by facilitators, allowing for the identification of key user requirements.

[Read the article](#)



*An on-line survey was addressed to main stakeholders of the pilot cities in order to collect their requirements for a tool specifically designed to plan and manage planting of trees*

## 3D tree map of Copenhagen

A detailed inventory of city trees is essential both for large city administrations and smaller municipalities.

Many cities have mapped the trees they maintain and gather various tree attributes for their public trees, while on the other hand they have no or little information on private trees.

[Read the article](#)



*Urban trees play a crucial role in enhancing the well-being of city residents.*

## The 100KTREES Consortium



DHI

Project coordinator  
Denmark

[www.dhigroup.com](http://www.dhigroup.com)



SDA

Bulgaria

[www.sofia-da.eu](http://www.sofia-da.eu)



Eurosense

Belgium / Germany

[www.eurosense.com](http://www.eurosense.com)



EcoTree

France

[ecotree.green](http://ecotree.green)



GISIG

Italy

[www.gisig.eu](http://www.gisig.eu)



Vrije Universiteit  
Brussel/Bitagreen

Belgium

[bitagreen.io](http://bitagreen.io)



OneTree Foundation  
(EdnoDarvo)

Bulgaria

[ednodarvo.io](http://ednodarvo.io)



CWare

Project lead, Denmark

[www.cware.eu](http://www.cware.eu)



Urban Digital

UrbanDigital

Denmark

[www.urbandigital.dk](http://www.urbandigital.dk)



NDConsult Ltd

Associated partner, UK

[www.ndconsult.eu](http://www.ndconsult.eu)

## FOLLOW US



Co-funded by  
the European Union

*100KTREES project receives funding from the European Union's Horizon Europe Programme under Grant Agreement N. 101082551. Views and opinions expressed are however those of the author(s) only and do not necessarily reflect those of the European Union. Neither the European Union nor EASME can be held responsible for them.*

Copyright © 2023 100KTREES Project, All rights reserved.

Want to change how you receive these emails?  
You can [update your preferences](#) or [unsubscribe from this list](#).

